

Fusion3 EDGE

**Unrivalled 3D Print Quality At High Speed,
Ease of Use, and Reliability.**



**USA Made,
Only \$8,849**

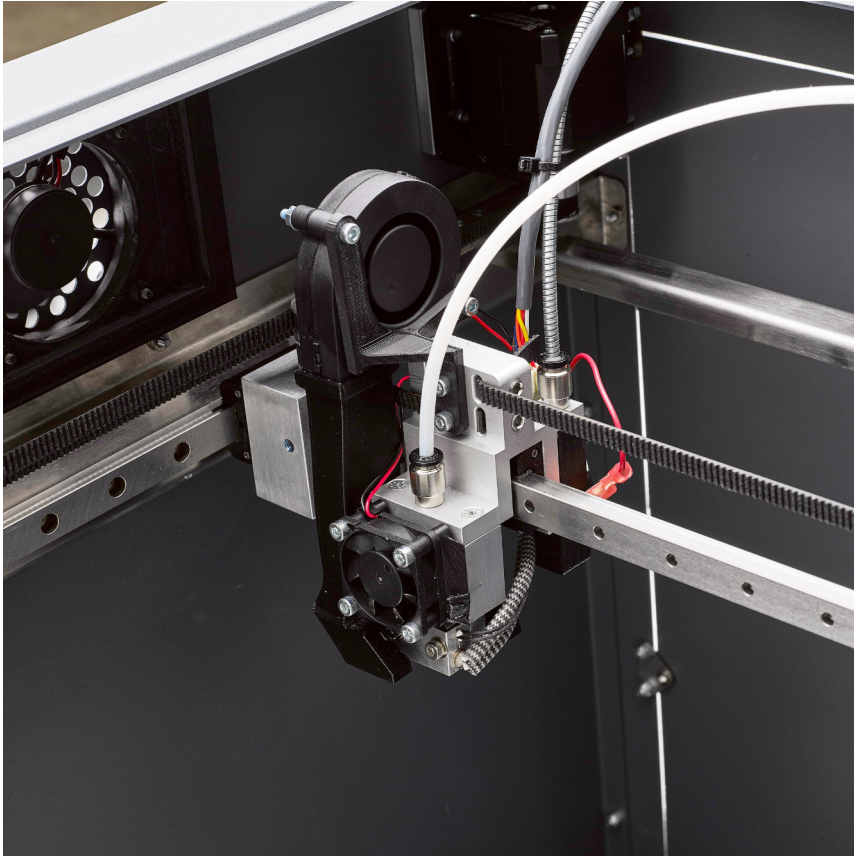
Free US shipping to most locations

Heavy-Duty Cart Sold Separately

Authorized Reseller
Strategic 3D Solutions, Inc.
4805 Green Road, Suite 114
Raleigh, NC 27616
919-451-5963
info@strategic3dsolutions.com
<https://strategic3dsolutions.com/>

EXCEPTIONAL PRINT QUALITY AT HIGH SPEED

Fusion3's 'F-Series' motion control system delivers faster speeds, greater visual quality and tight tolerances.



Validated through millions of operating hours with thousands of customers.

EDGE utilizes Fusion3's "F-Series" platform, with upgraded motion control components including all-new linear rails, Gates 2GT2 belts, and specially tuned stepper motors.

Fusion3's EDGE 3D printer has attained even faster speeds at standard print settings with tremendous improvements in print quality.

New "Fast" mode with for printing certain materials at 200MM/sec using a .4MM print head.

NEW ANVIL PRINT HEAD

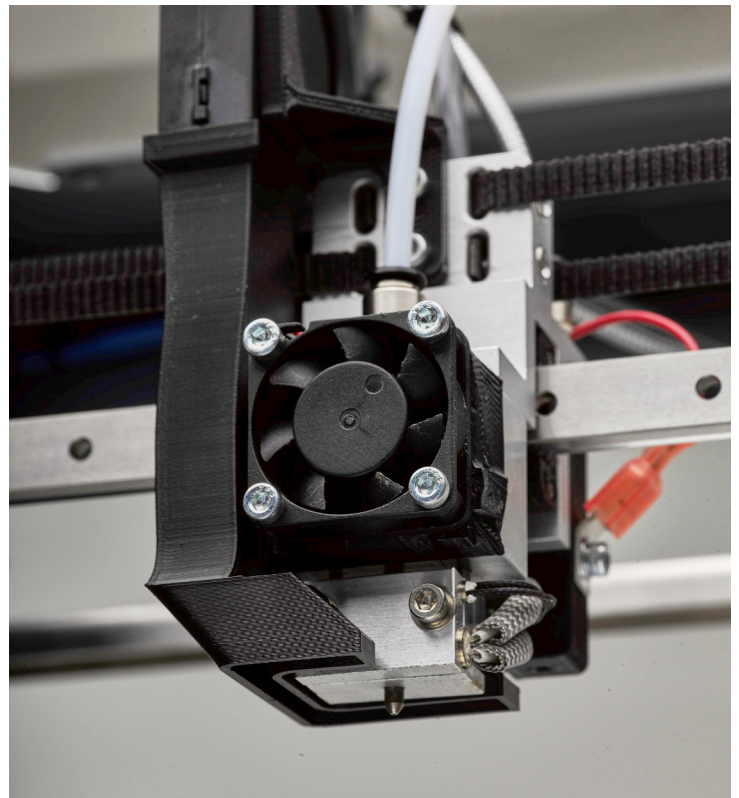
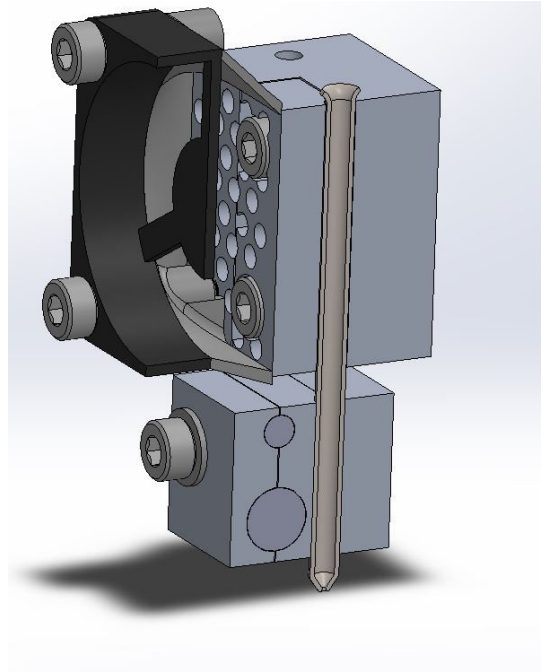
Patent-Pending technology provides greater reliability, performance and easier maintenance.

Fusion3's patent-pending ANVIL print head system combines precision milled print head components with an inexpensive surgical steel print tube used in place of the traditional screw-in 3D printer nozzle.

The ANVIL print head components are precision milled, and utilize a high-quality, high-temperature heater cartridge and a PT-1000 temperature sensor.

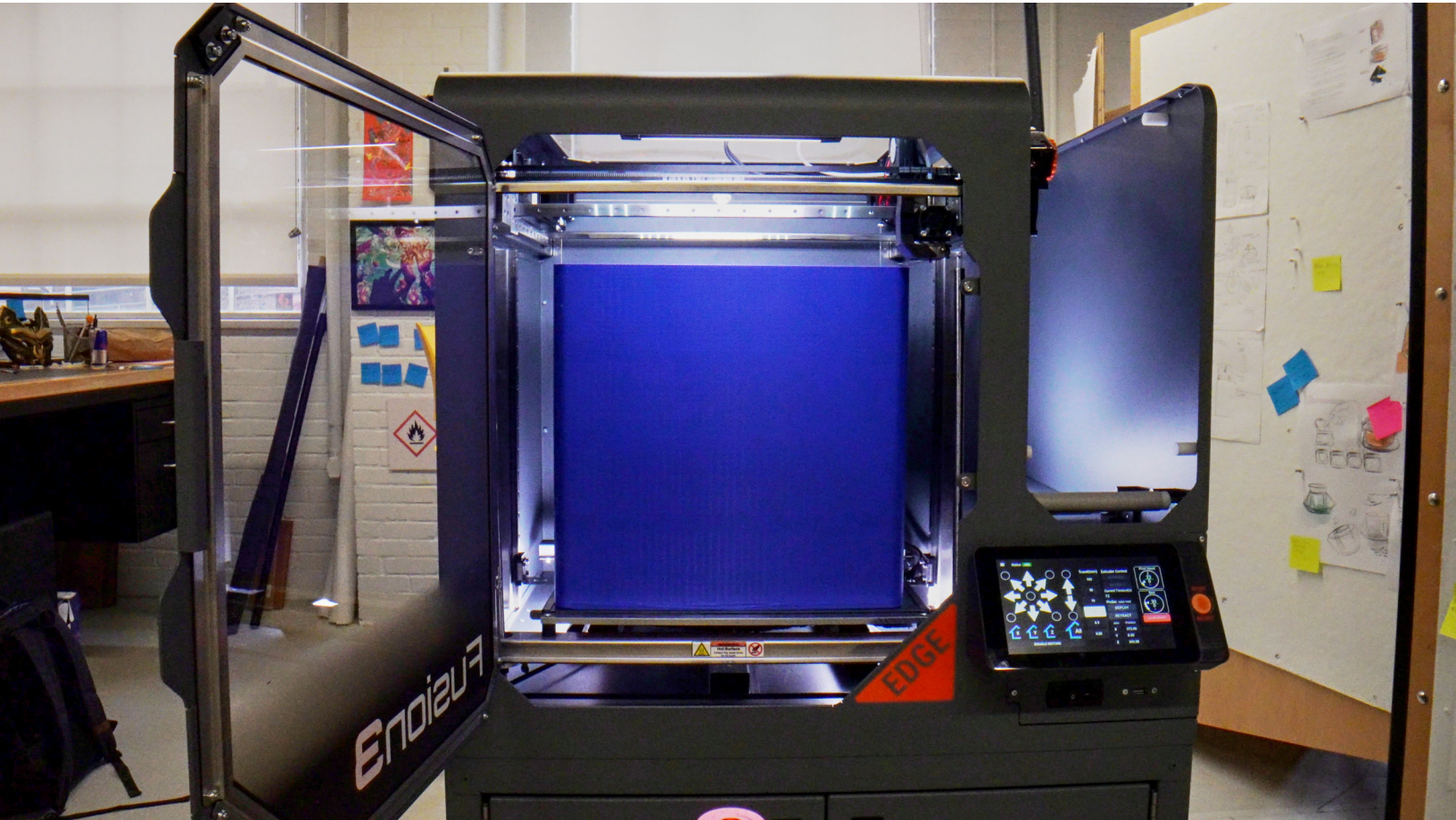
Use of the single surgical steel print tube, enables faster 3D printing and is wear-resistant for use with abrasive filaments such as carbon fiber or fiberglass-reinforced filament.

In addition, the single tube design is more reliable, eliminating the chance of leakage found in a traditional screw-in nozzle print head, and inexpensive and easy to replace, translating to lower operating cost.

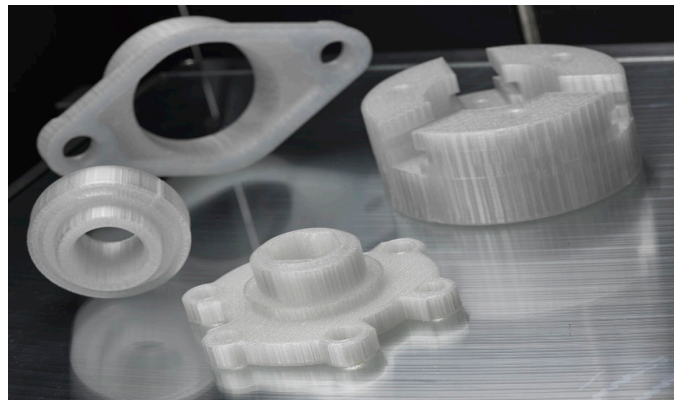
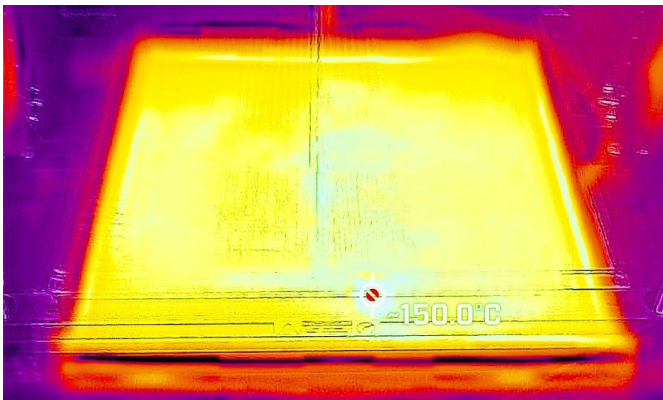


LARGEST FUSION3 3D PRINTER EVER

Faster print speeds, more heat translate to better large engineering-grade parts in less time.



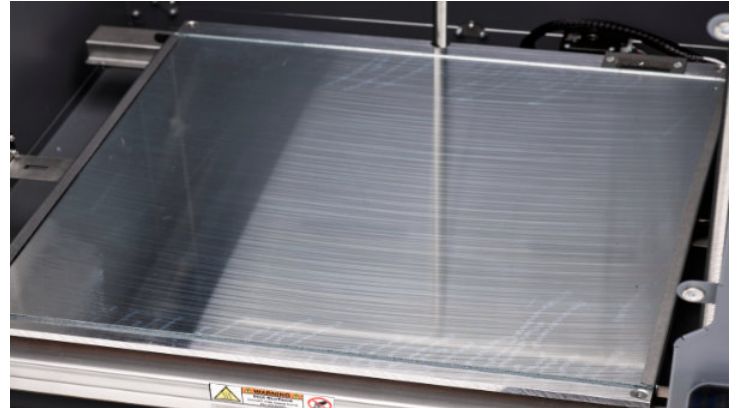
Fusion3's passively heated build area prints parts as large as 14"x14"x14.5". Heated by the multi-zone print bed and ANVIL print head, the enclosure reaches temperatures up to 70°C, ensuring excellent print results with engineering-grade materials such as ABS and polycarbonate.



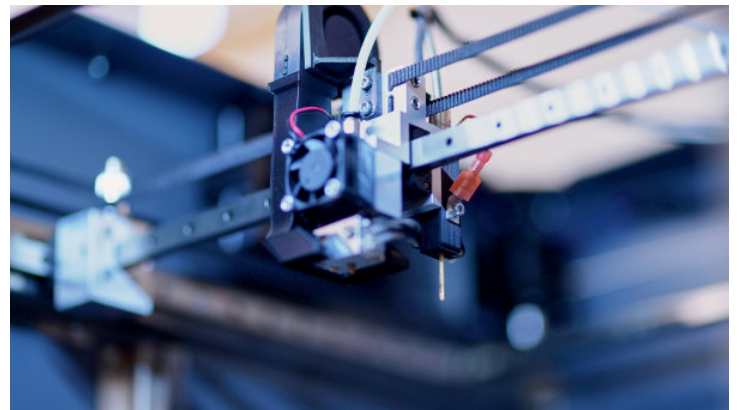
EASY TO OPERATE & MAINTAIN

New features to assist users with operation and maintenance without sacrificing performance & flexibility.

Every EDGE comes standard with a 1/4" aluminum tool plate print bed with standard glass surface. An optional magnetic 1/4" tool plate with removable surfaces is also available for advanced/expert users. These surfaces provide a near flat reference surface contributing to the performance of our new mesh bed leveling system.



Fusion3's new proprietary, ultra-light touch probe, and this reference print surface, enable EDGE's mesh probe bed leveling system to ensure a near-perfect first layer for each print.



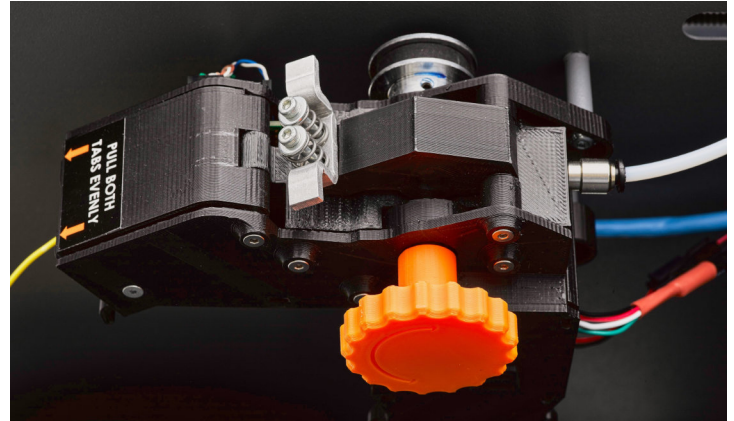
New control systems are powered by a dedicated 64-Bit ARM processor, separate from the 3D printer's control board. Powering a 7" touch screen, more useful information and robust remote management tools, including maintenance reminders, are available to the operator.



DURABLE & RELIABLE 3D PRINTING

Our customers require maximum up-time. Fusion3 engineers and supports our 3D printers to achieve this goal.

EDGE also features a new, upgraded V3 extruder that uses a belt drive system and an upgraded filament detection monitor that can be tuned to different detection settings based on the material printed. At customer's requests, we included new 'push to fit' connectors for the Bowden tube to make serving easier. Combined with the new linear rail system and bed leveling, EDGE is an increasingly robust and durable system for use in the most demanding environments.



Fusion3 provides the longest standard warranty offered by any 3D printer manufacturer (as of 2/1/2022). Our standard warranty covers materials and workmanship for 2 years from date of purchase.

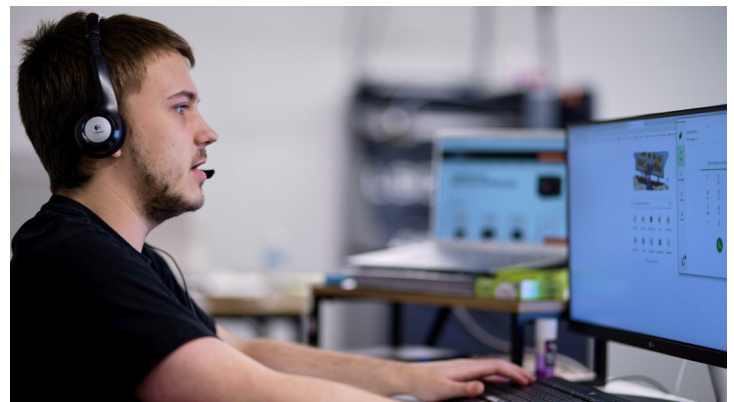
STANDARD 3D PRINTER WARRANTIES

(as of 2/1/2022)

MANUFACTURER	DURATION	PLACE OF MANUFACTURE
Fusion3	2 Years	USA
Stratasys	1 Year	USA
Ultimaker	1 Year	Netherlands
Zortrax	1 Year	Poland
Raise3D	90 Days / 1 Year	China
Markforged	90 Days / 1 Year	USA
Makerbot	1 Year	China

□

Every Fusion3 3D printer includes free technical support for the life of the 3D printer. Fusion3's US-based, technical support team is comprised of experts who have experience manufacturing and operating our 3D printers. Our support desk is staffed between 8 am and 8 pm US Eastern Time, Monday through Friday, to troubleshoot and assist in the repair of any technical issues that might arise.



WIDEST VARIETY OF 3D PRINTABLE MATERIALS

Fusion3's testing & certification process ensures our customers successfully print 'out of the box'.

Every Type Of 3D Printable Plastics

ABS	FIBERGLASS REINFORCED	PET/PETG
ASA	FLEXIBLES (including TPU & TPE	PLA
CARBON-FIBER REINFORCED	HIPS	POLYCARBONATE
CO-POLYESTERS	KEVLAR REINFORCED	POLYPROPOLYNE*
DECORATIVE (including Wood & Stone filled)	METAL (316L STAINLESS)*	PVDF*
	NYLON	and MORE...

Items with * require the Fusion3 EDGE magnetic bed and a specific, additional print surface

Fusion3 does not sell filament. Instead, we encourage customers to purchase materials on the open market, encouraging competition in price, quality, and innovation. We only ask that you either use what is already on our Certified Materials List or have us test new filaments prior to use.



Fusion3 subjects new 3D printer materials to a rigorous testing process. First we measure multiple samples of the material to ensure consistency of extrusion, as too much variation can have detrimental impacts on the performance of your high-performance Fusion3 3D printer. Then we engage in a series of different tests to ensure the quality of material and its suitability for 3D printing with the Fusion3 hardware. Should the material pass those tests, we then create the different material settings ("profiles") for each of our 3D printers at different performance levels.



SAFE & COMFORTABLE FOR YOUR WORK ENVIRONMENT

We are always seeking ways to incorporate additional features to drive further comfort, safety & convenience.

The fully-enclosed EDGE protects users from contact with hot surfaces. EDGE includes a new door interlock feature, which pauses prints if a user opens the door.



Fusion3 offers an optional HEPA & Carbon filter air filter, which is now located within the 3D printer enclosure, for operating locations without adequate ventilation, which helps contain potentially harmful emissions.



□

Quiet for the office or classroom, EDGE is only 37.5db when printing.



FOCUS ON SECURITY

Options for customers who safeguard proprietary & sensitive information within their 3D printing workflow.



Secure Version

Many of Fusion3's customers wish to safeguard their proprietary and sensitive information within the 3D printing workflow. The company offers two versions of EDGE to meet the different security needs of our customers.

The Standard Version of EDGE has open USB ports, wired and wireless networking, and convenience features to actively communicate status beyond the device.

Fusion3 designed the Secure Version of EDGE for companies, government, military, and similar organizations with strict information security guidelines. This version ships with only Ethernet networking, a locked USB port, no features that communicate beyond the device and ships with the Offline Activation version of our REACTOR 3D printing software which does not use the internet for license activation or updating.

Made in the USA

Fusion3's 3D printers are designed, manufactured and supported from our facilities in Greensboro, North Carolina. Product content is primarily from the US and whenever possible our suppliers are local to our company to ensure oversight and proper handling and quality control.

Compliant With Communication Device Standards (Section 889)

Fusion3 is very particular about the components used within our 3D printers as to the manufacturer, origin and quality. All of Fusion3's products and components are Section 889 compliant.

PRICE & SPECIFICATIONS

PHYSICAL DIMENSIONS & WEIGHT	
Dimensions (DxWxH):	657 x 720 x 640 mm (25.9 x 28.3 x 25.2 in)
Weight:	38.56 kg (65 lb)

PRINT SIZE & VOLUME	
Max Print Size: (LxWxH):	355 x 355 x 365 mm (14.5 x 14.5 x 13.5 in)
Max Build Volume:	1.64 cubic feet

PRINTING	
Print Technology	Fused Filament Fabrication
Max Print Speed:	250 mm/sec
Max Travel Speed:	500 mm/sec
Motion System	Fusion3's Patented 'F-Series' motion control system, updated with high-performance linear rails on all axes and 2GT belt CoreXY
Extruder / Feeder Type:	Bowden drive / Geared feeder
Filament Monitoring:	Yes, detects if a jam or run out, with dynamic timeout adjustment for printing materials that run at slower speeds

ENCLOSURE & PRINT SURFACE	
Ambient Operating Temp:	7°C-29°C, 45°F-85°F
Enclosure Temp:	70°C
Print Surface:	1/4" Aluminium toolplate with glass and mutizone heater, optional 1/4" magnetic toolplate surface for use with glass and multiple optional print surfaces, including BuildTak, Garolite, Kapton, PEI, and Polypropolyne
Maximum Bed Temp:	145°C
Bed Leveling:	Automatic, cable driven probe type with self-calibrating probe offset.

MATERIALS	
Diameter	1.75MM
Types:	All major 3D printable plastics (see Certified Materials List)
Spool Handling:	Adjustable, Spool Roller
Max Spool Size:	Up to 12" diameter, 6" width Note: customer must ensure spool does not create drag which will impact performance of extruder.

ELECTRICAL	
AC INPUT	110V / 230V, 350W Avg
Peak Power	6A/3A, 600W

WARRANTY & SUPPORT	
Standard Warranty:	2 Years, Materials & Workmanship
Technical Support:	Free for Life of the 3D Printer

PRICE & SHIPPING	
EDGE 3D Printer:	\$8,849
Shipping:	Via LTL Freight or Air Freight
Shipping Cost:	Free Shipping to most US locations – price varies for international.

AVAILABLE OPTIONS	
EDGE Heavy-Duty Rolling Cart:	\$800
ANVIL Print Head:	\$125
Set of ANVIL Replacement Print Tubes (.4MM, .6MM or .8MM)	\$50
Set, 3 Glass Print Beds:	\$50
Replacement Filter Set:	\$49
EDGE Stack Light (visual status):	\$90
Filament Bay Dehumidifier:	\$130
Magnetic Print Bed (Installed at factory):	\$300
Reusable Sheet Steel Print Surface (for Magnetic Print Bed):	\$34.99
Various Print Surfaces (requires Reusable Sheet Steel Print Surface):	Varies
Binder EDS 115 Lab Oven (for Humidity Free Filament Storage):	\$1620
1500VA UPS Basic Backup – Power Conditioning & 7-15 minutes of power	\$449
1000VA UPS Smart Backup Controller – Power Conditioning, 7-15 minutes of power, control multiple daisy chain batteries	\$699
Daisy Chainable Battery (each) – provides up to 50 minutes run time (requires Smart Backup Controller)	\$699

SOFTWARE	
Processing Software:	Fusion3 F3slic3r. Free download with an unlimited number of activations.
Operating Systems:	Windows
File Types:	.STL, .OBJ

ONBOARD CONTROLLER, STORAGE & NETWORKING	
Screen:	7" full color touchscreen
Print Controller:	32-bit, 120mhz ARM-Based controller
Interface Controller:	62-but, 1.4Ghz, ARM-Based Controller
Storage:	Standard Version: Onboard 32Gb flash storage, external USB port Secure Version: Onboard 32Gb Flash storage, locked external USB port.
Remove Management:	Intuitive user interface accessed via web browser over local network, giving full access to all functionality, password secured.
Network Connections:	Standard Version: 2.4Ghz, 5Ghz WiFi, Bluetooth 4.2, Gigbit Ethernet Secure Version: Gigabit Ethernet Only

PRINT HEADS/ PERFORMANCE	.4MM	.6MM	.8MM
Print Head:	Fusion3 ANVIL	Fusion3 ANVIL	Fusion3 ANVIL
Layer Height (Min-Max)	20-300 microns	100-400 microns	200-500 microns
Min Feature Size	.5mm ²	.75mm ²	1.0mm ²
Feature Tolerance	0-6" +/- .005 6"+ +/- .010	0-6" +/- .005 6"+ +/- .010	0-6" +/- .005 6"+ +/- .010
Print Nozzle (Tube)	.4mm surgical steel, wear resistant, replaceable tube	.6mm surgical steel, wear resistant, replaceable tube	.8mm surgical steel, wear resistant, replaceable tube
Maximum Melt Temp.	320°C	320°C	320°C
Maximum Cubic Flow Rate:	20mm ³ /sec	36mm ³ /sec	45mm ³ /sec